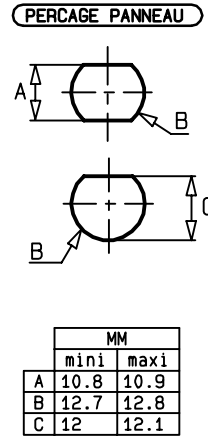
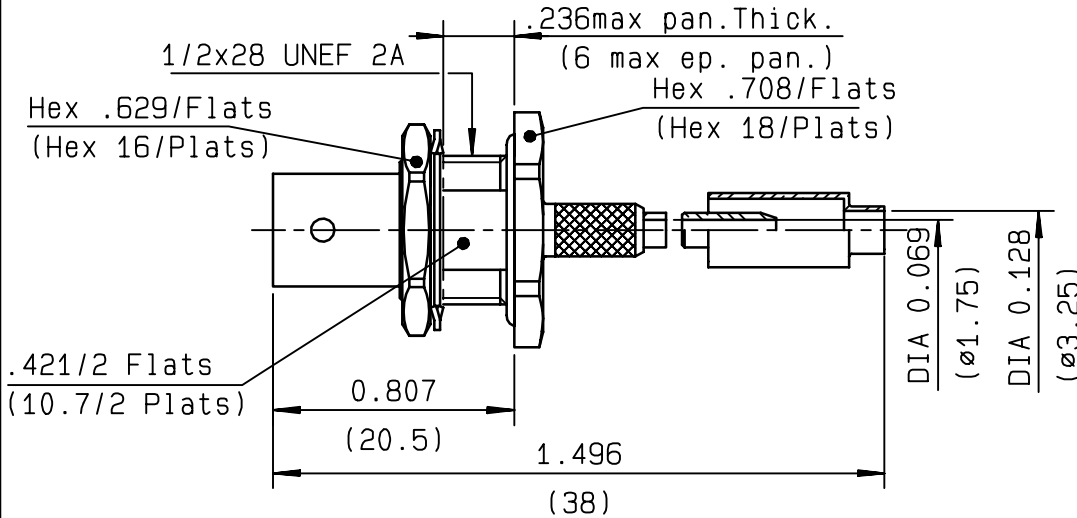


STRAIGHT BULKHEAD JACK PANEL SEAL
REAR MOUNT CRIMP TYPE - CABLE 2.6/75 S

R142.331.027
SERIES BNC 75



NOMINAL IMPEDANCE	75	Ω
FREQUENCY RANGE	0-1.5	GHz
TEMPERATURE RATING	-65/+165	$^{\circ}C$
V.S.W.R	1.30 +	0 x F(GHz)Maxi
RF INSERTION LOSS	0.115	\sqrt{F} (GHz) dB Maxi
VOLTAGE RATING	335	Veff Maxi
DIELECTRIC WITHSTANDING VOLTAGE	1000	Veff Mini
INSULATION RESISTANCE	5000	M Ω Mini
HERMETIC SEAL	NA	Atm.cm ³ /s
LEAKAGE (pressurized only)	RUISS	
MECHANICAL DURABILITY	500	Cycles
WEIGHT	17.5	gr
SPECIFICATION		

CABLES : **RG 179**
RG 187

OTHERS CHARACTERISTICS

CABLE RETENTION	40	N Mini
CENTER CONTACT RETENTION		
Axial force - mating end	NA	N Mini
Axial force - opposite end	NA	N Mini
Torque	NA	cm.N Mini
RECOMMENDED TORQUES		
Mating	NA	cm.N
Panel nut	370	cm.N
Clamp nut	NA	cm.N

CONNECTOR PARTS	MATERIALS	FINISH	(all values are given in micrometers)
BODY	BRASS	BBR 2	
OUTER CONTACT			
CENTER CONTACT	BRASS	GOLD 1.3 OVER COPPER 2.5	
INSULATOR	PTFE	-	
GASKET	SILICONE RUBBER	-	
OTHERS PIECES	BRASS	BBR 2	

ISSUE	CREATION DATE	FILE PART-NUMBER
9906B01	12/12/1996	96-0132-051



CLAVEL

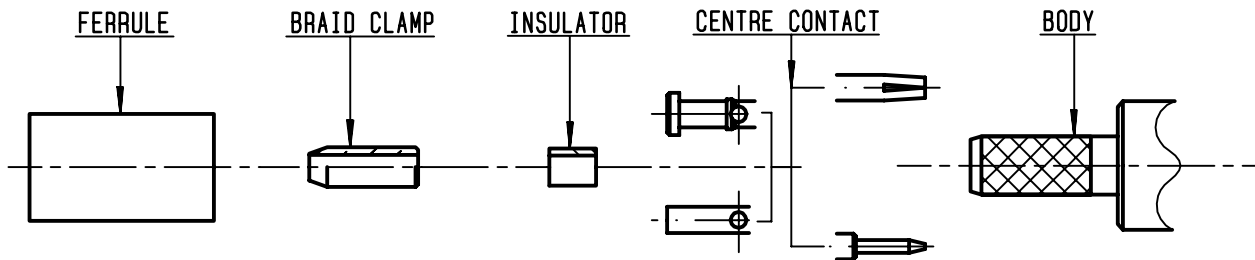
The information given here is subject to change without notice.
 Design changes may be in order to improve the product .

Connect to the future



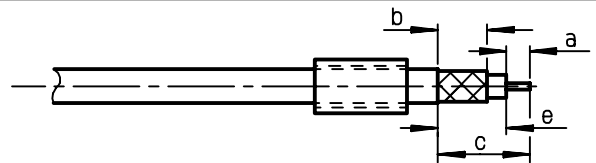
R142.331.027

ISSUE 9906B01 SERIES BNC 75



①

Slide onto the cable the ferrule
Strip the cable .
-
-

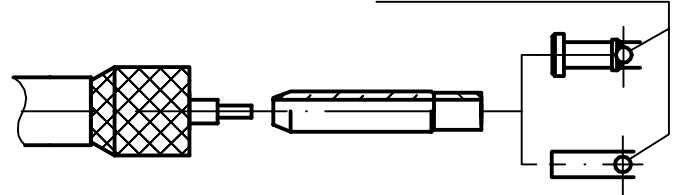


Stripping	a	b	c	d	e
inch	0.157	0.394	0.728	0	0.571
mm	4	10	18.5		14.5

②

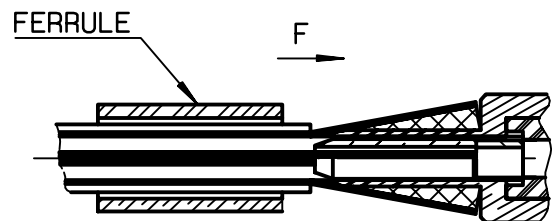
Fan the braid .
Slide the braid clamp and insulator between the dielectrique and the braid .
Slide on centre contact until it bottoms against cable dielectrique .
Solder or crimp centre contact .
Crimping tool : R282 223 000 (Hex. : .068)
or crimping tool R282 293 000 (M22520/5-01)
+ dies R282 235 011 (M22520/5-11)

SOLDER / CRIMPING



③

Slide cable into the body until bottoms against insulator .
Slide ferrule over the braid .
(In direction F)
-



④

Crimp the ferrule with crimping tool R 282 223 000 (Hex. : .213) or crimping tool R282 293 000 (M22520/5-01)
+ dies R282 235 011 (M22520/5-11)
Cut the excess of braid .
-
-
-
-

